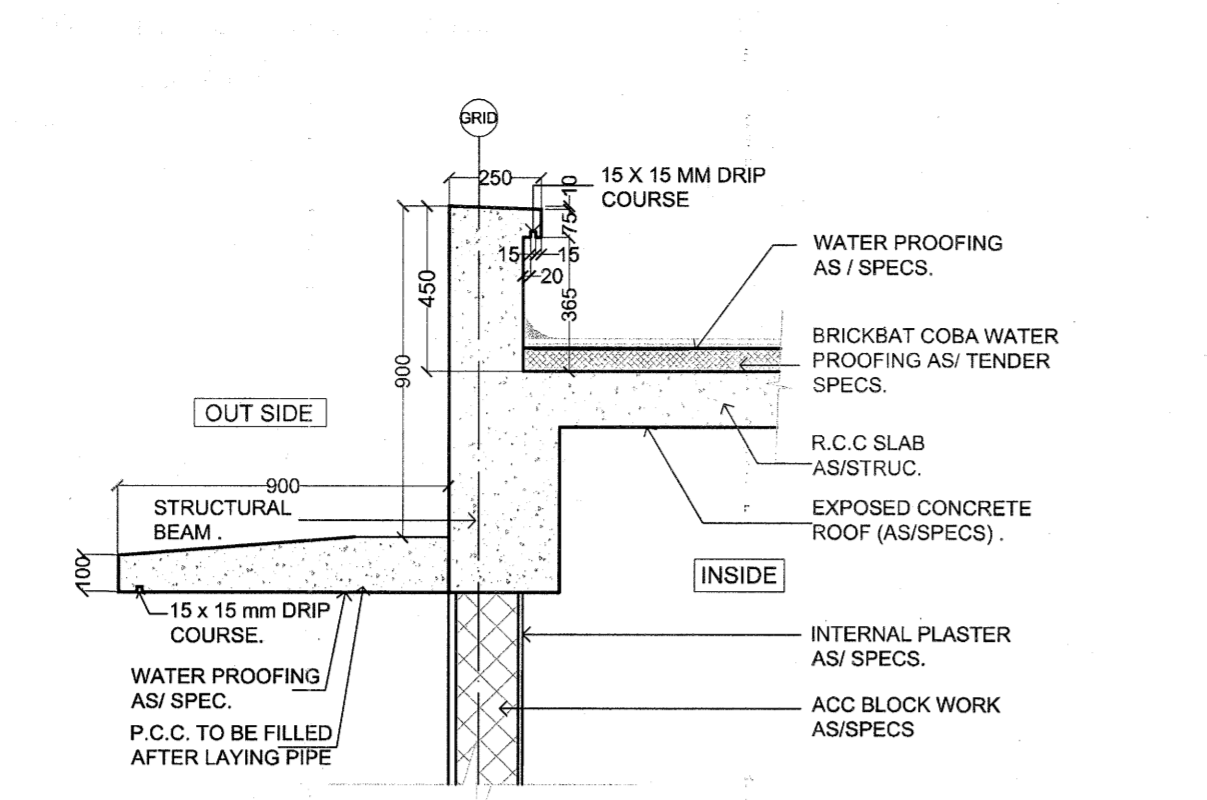
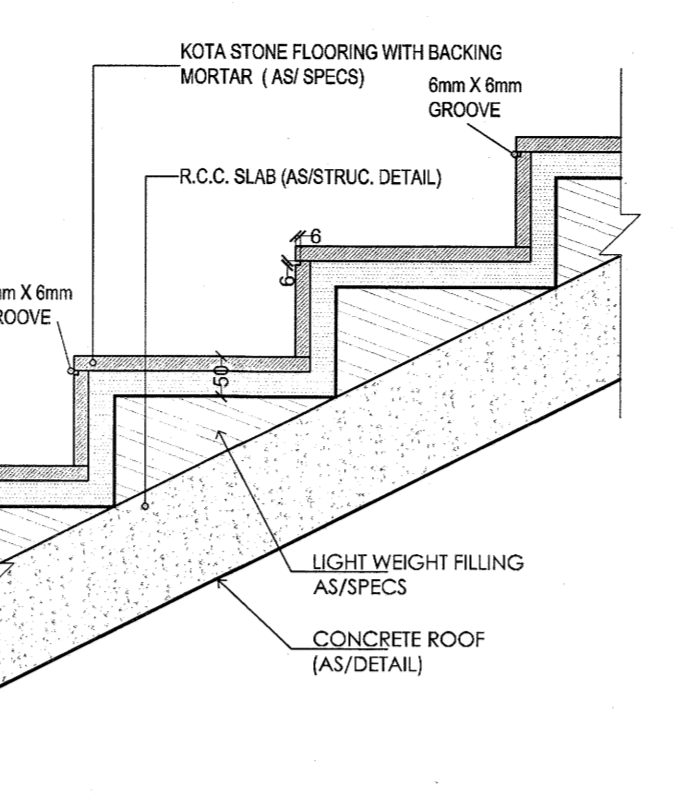


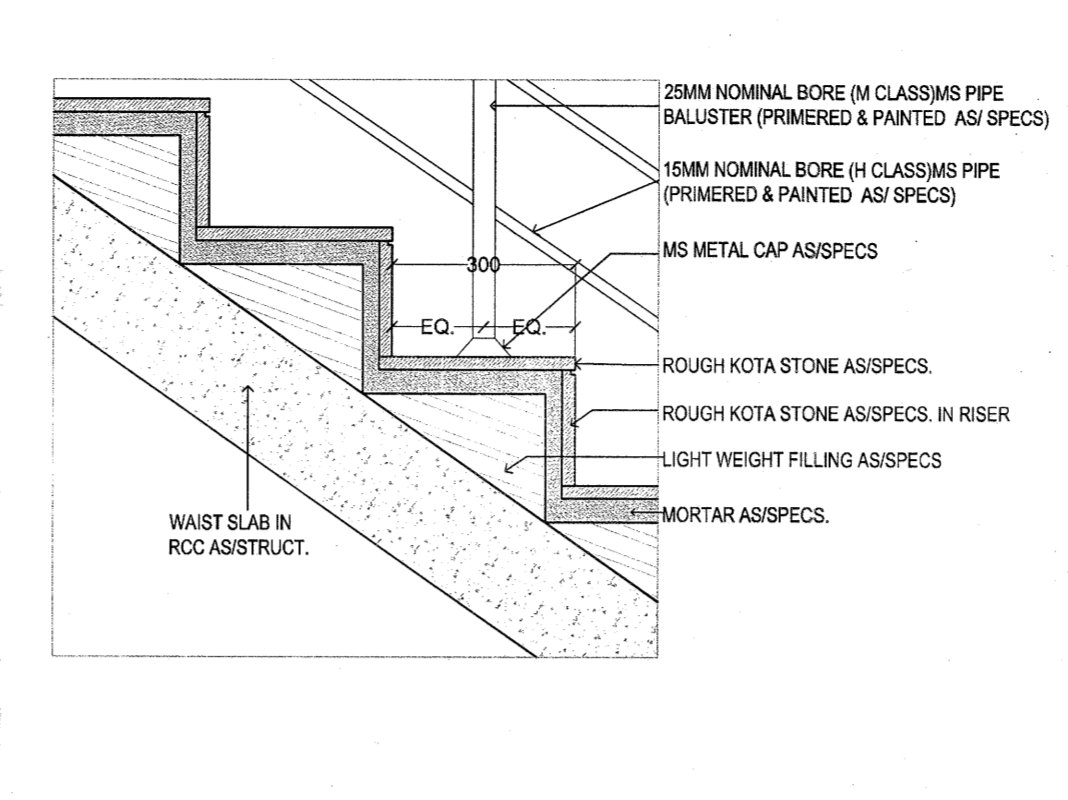
18 TYPICAL CANOPY DETAIL FROM PIPE LOCATION (DETAIL 'A')
SCALE-1:20



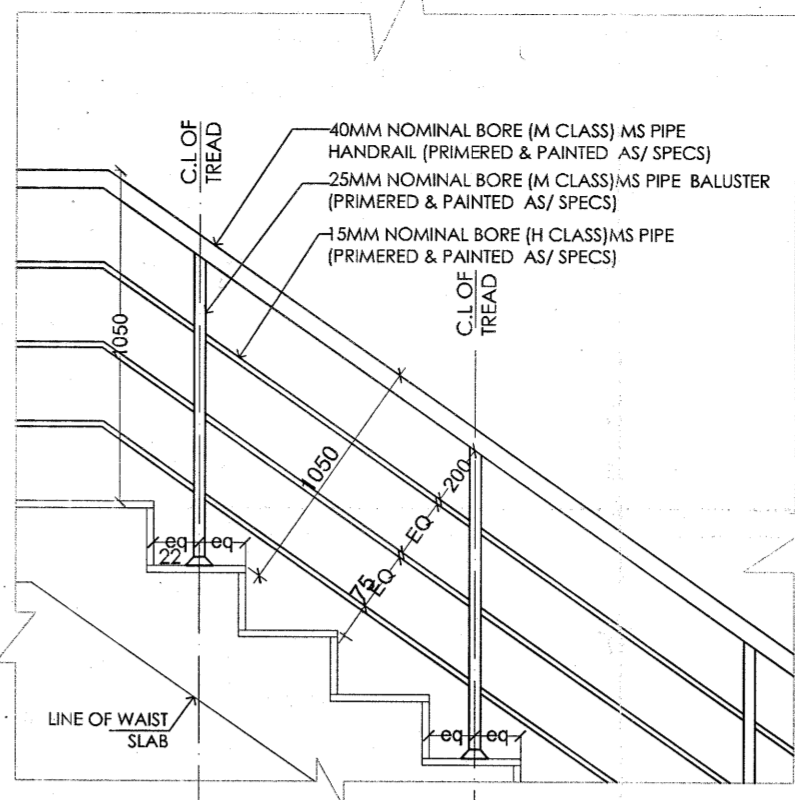
19 TYPICAL CANOPY DETAIL FROM PIPE LOCATION (SECTION-PP)
SCALE-1:20



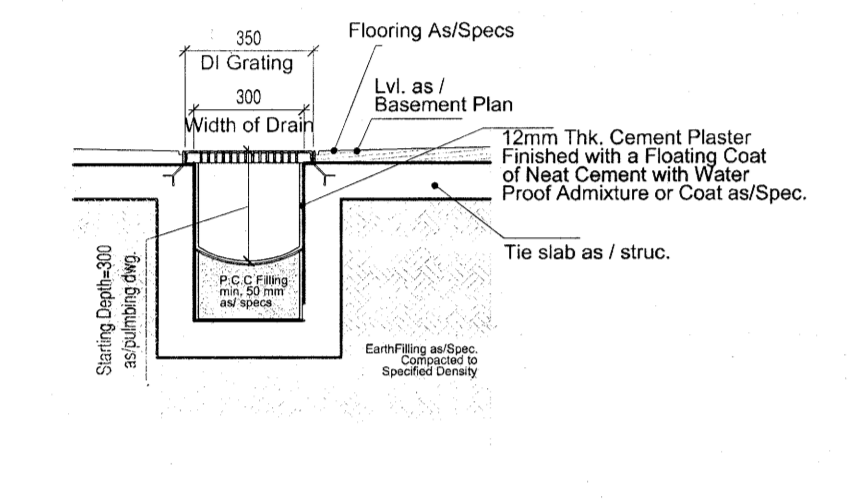
20 TYPICAL STEP DETAIL
SCALE-1:10



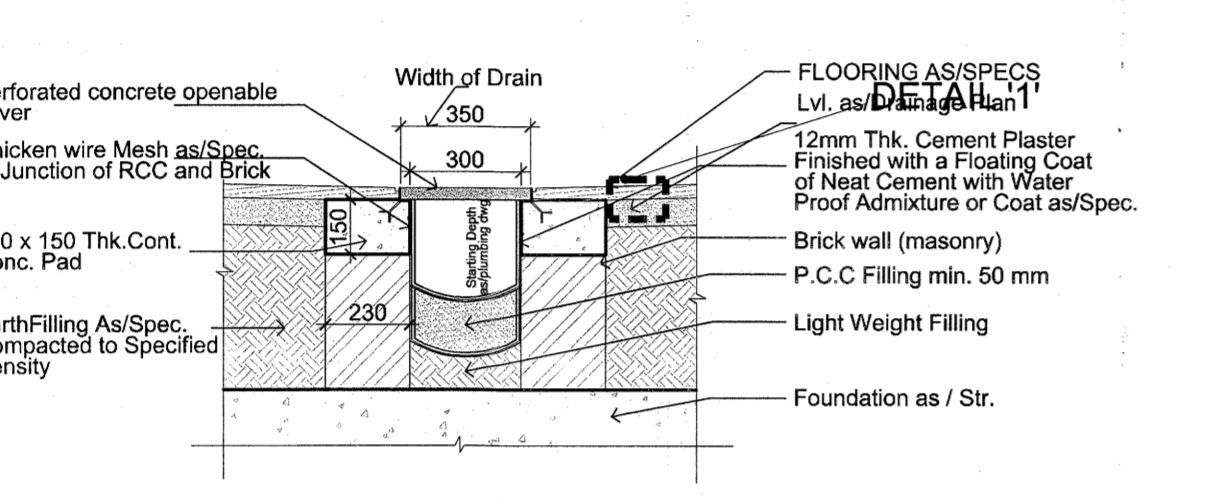
21 TYPICAL DETAIL OF HANDRAIL
SCALE-1:10



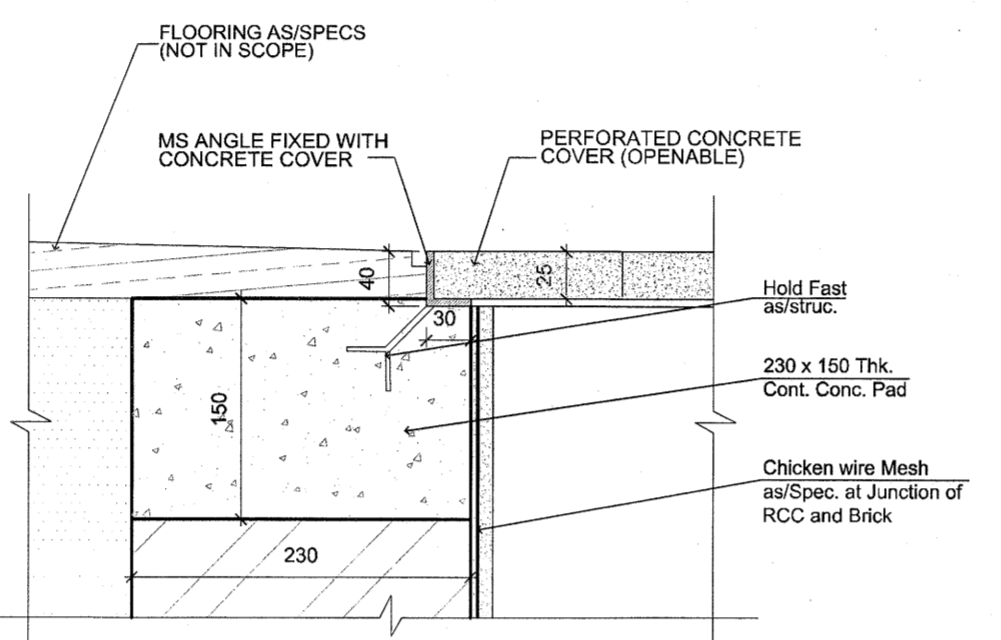
22 TYPICAL RAILING DETAIL
SCALE-1:20



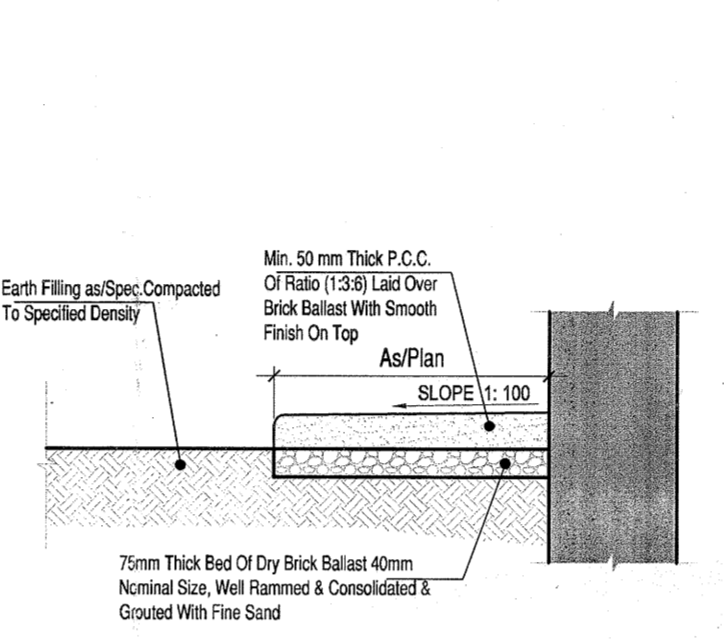
23 TYPICAL DRAIN DETAIL IN BASEMENT
SCALE-1:20



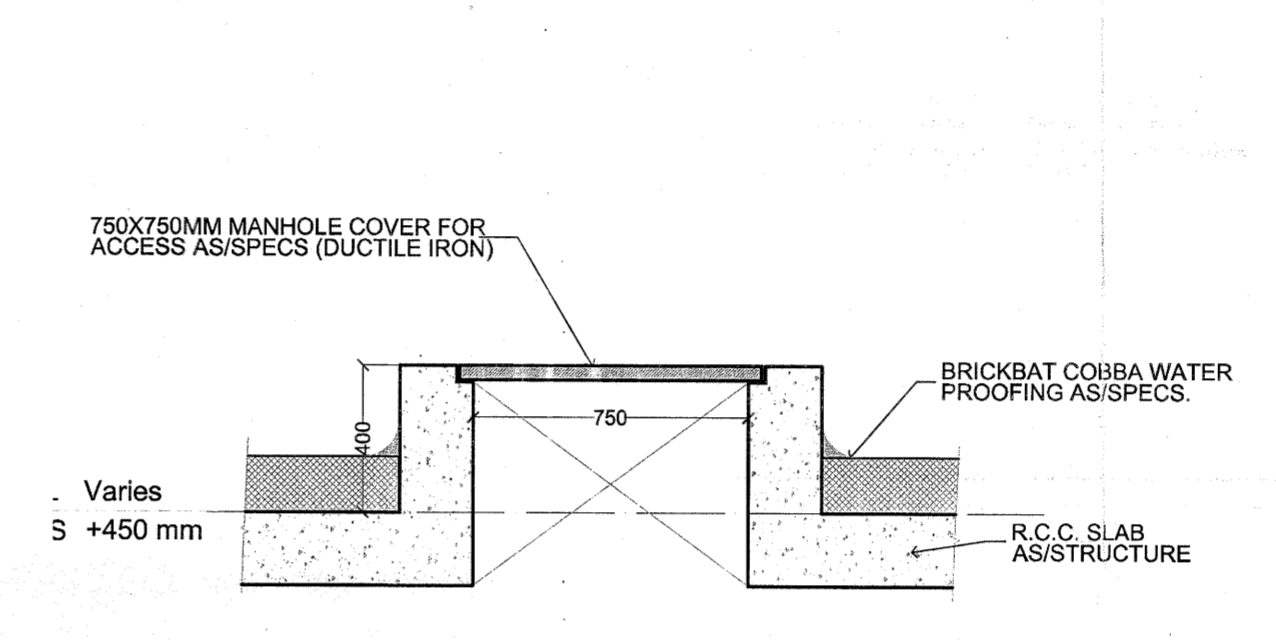
24 TYPICAL SURFACE R.C.C. DRAIN
SCALE-1:20



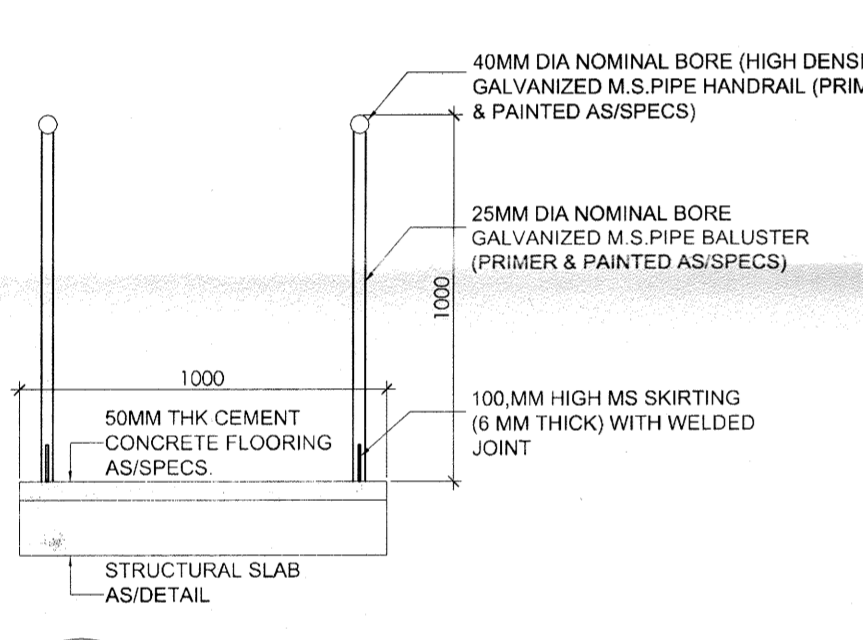
25 CONCRETE COVER DETAIL '1'
SCALE-1:5



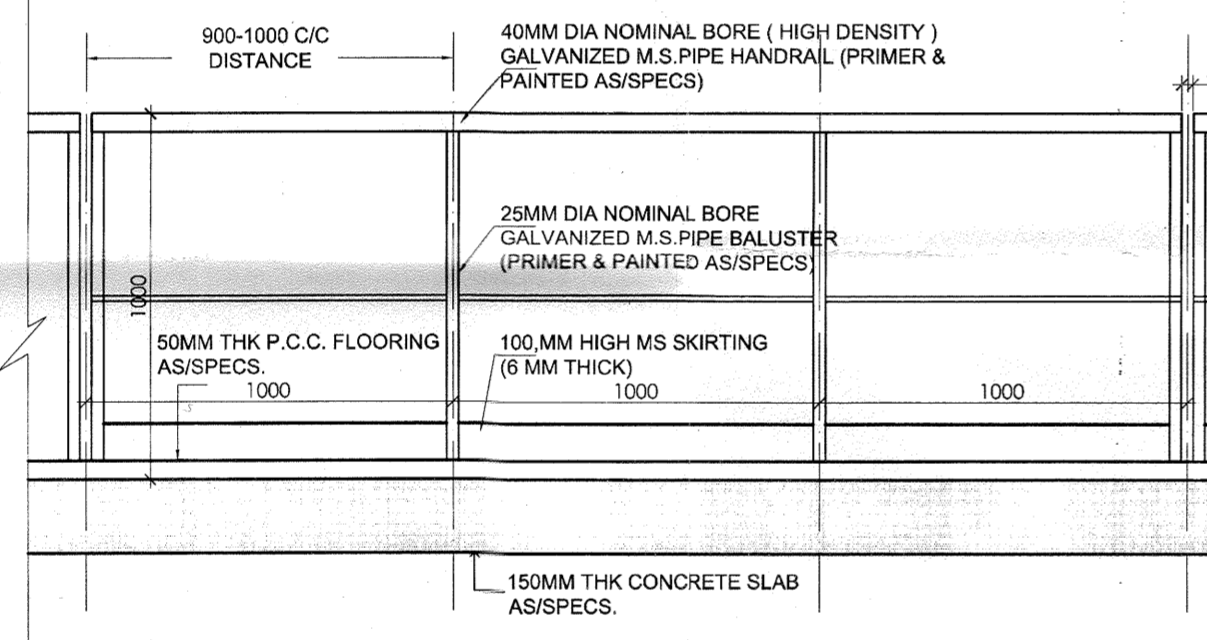
26 PLINTH PROTECTION DETAIL-B
SCALE-1:20



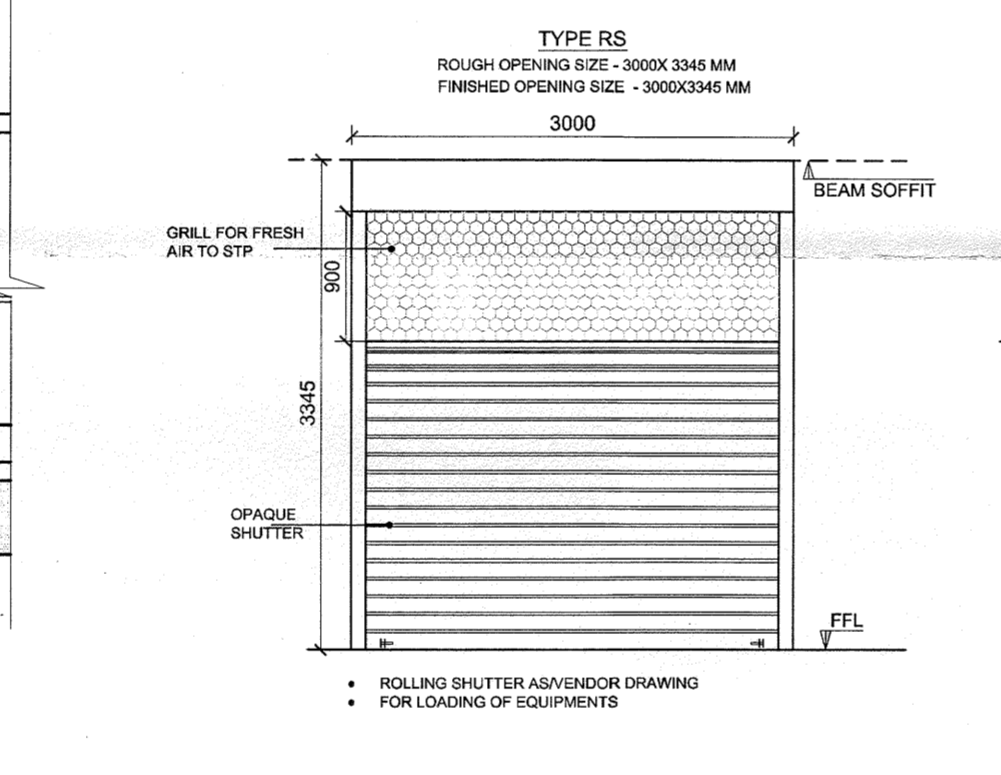
27 MANHOLE COVER DETAIL
SCALE-1:20



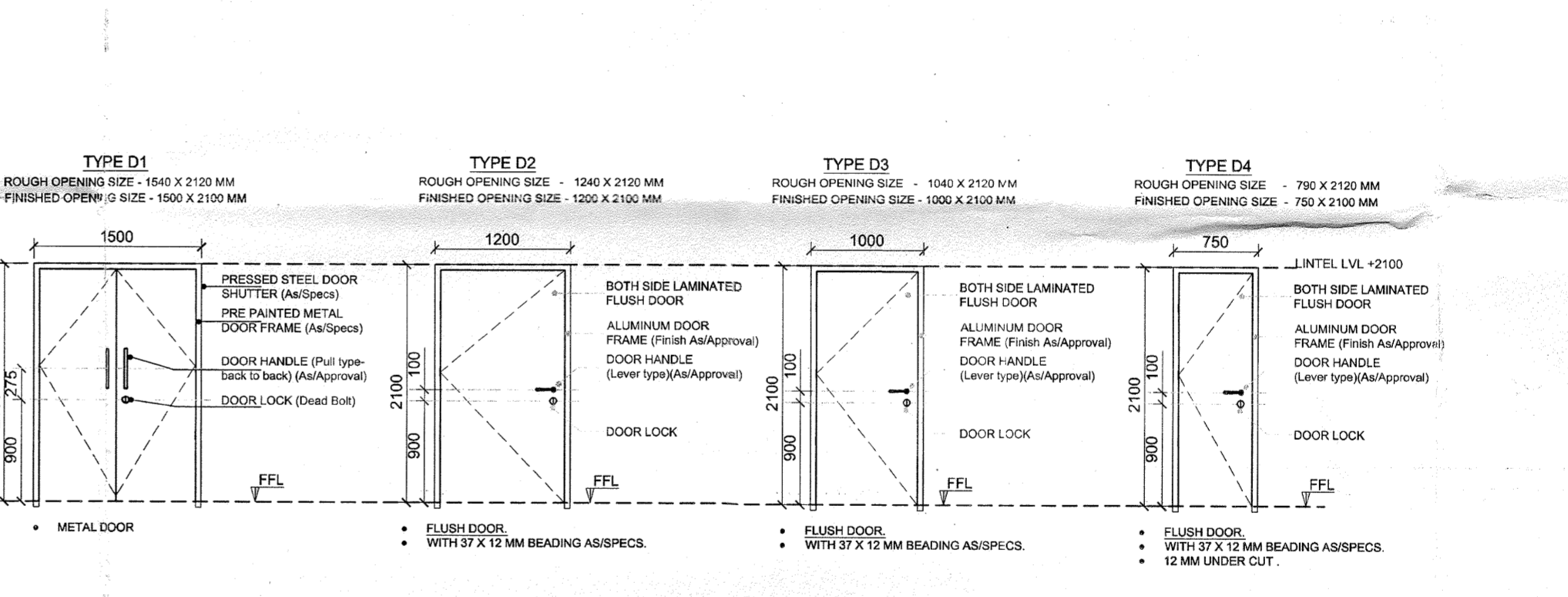
28 TYPICAL WALKWAY DETAIL
SCALE-1:20



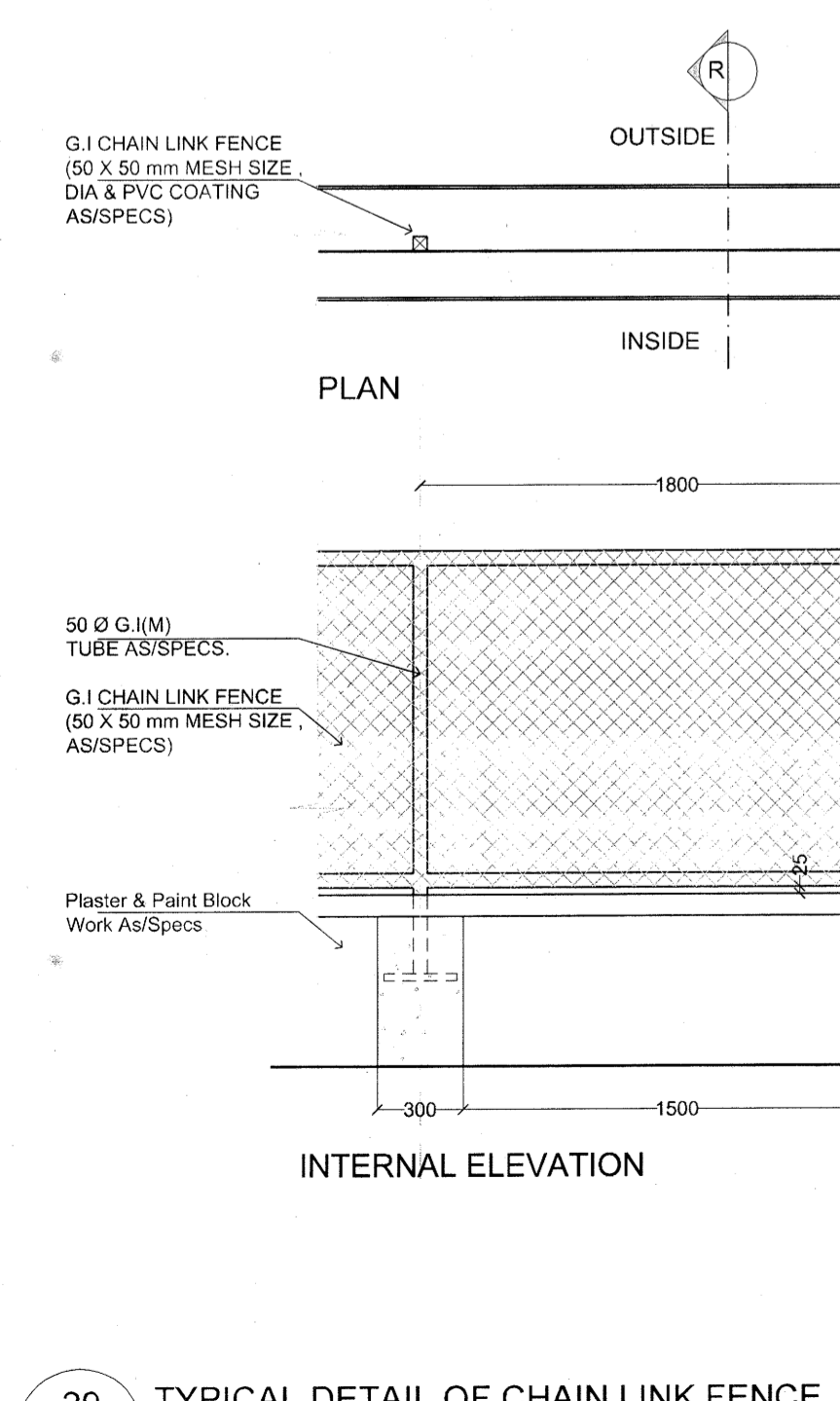
28 TYPICAL WALKWAY DETAIL
SCALE-1:20



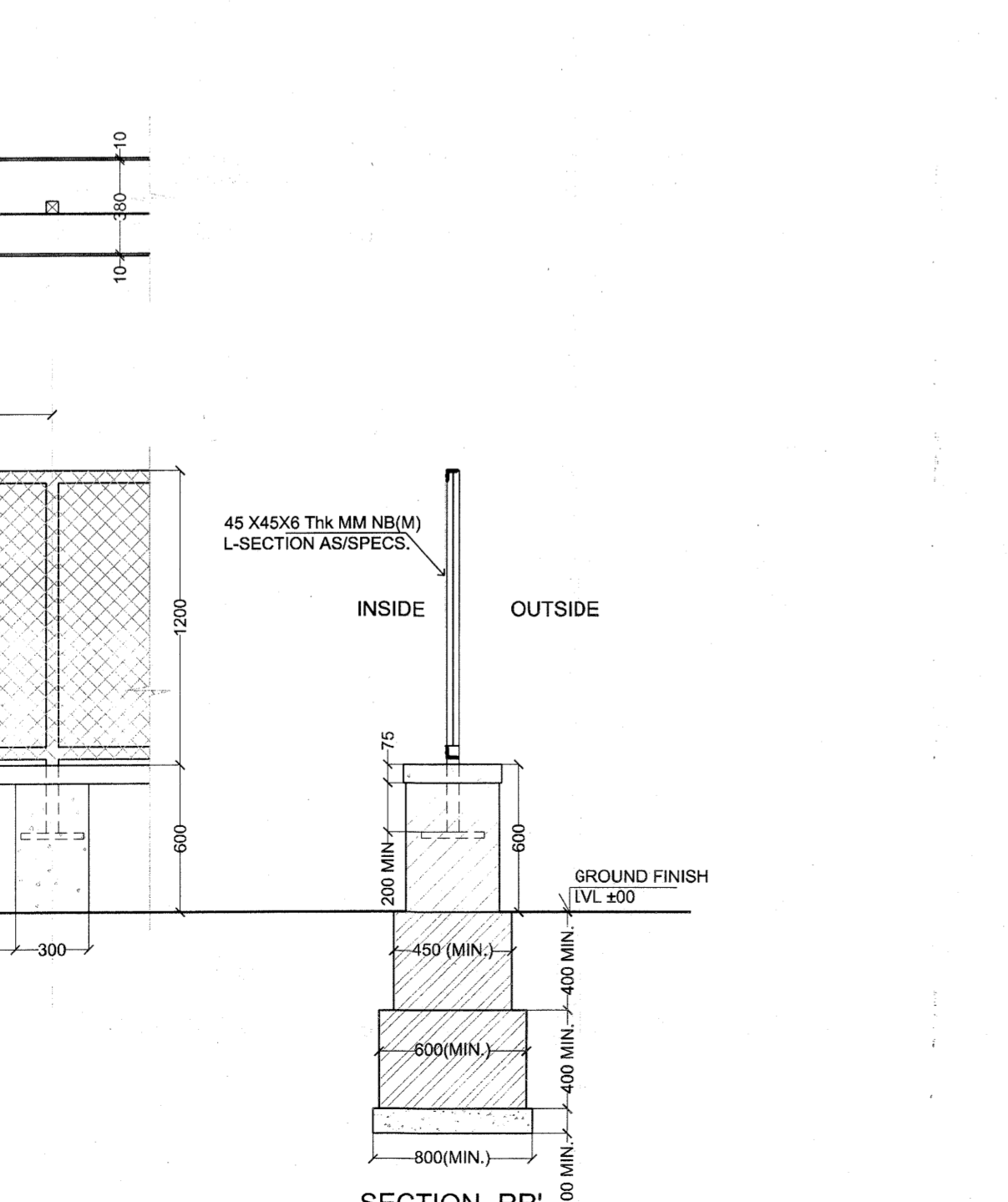
30 DOOR & WINDOW DETAILS
SCALE-1:50



31 ELEVATION - A
SCALE-1:150



29 TYPICAL DETAIL OF CHAIN FENCE
SCALE-1:25

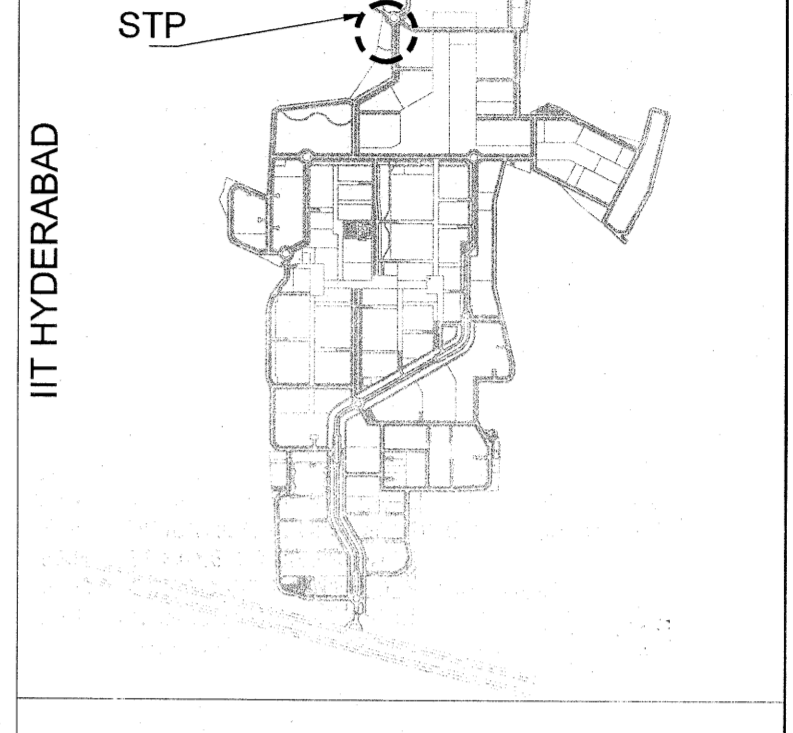


29 TYPICAL DETAIL OF CHAIN FENCE
SCALE-1:25

NOTES

- ALL M.S. ELEMENTS SHALL BE FINISHED WITH ZINC CHROMATE PRIMER & 2 COATS OF SYNTHETIC ENAMEL PAINT OF LOW V.O.C.
- ALL R.C.C. MEMBERS COMING IN CONTACT WITH SEWAGE SHALL BE COATED WITH 2 COATS OF EPOXY COATING.
- FOR VENTILATION - SUFFICIENT NOS. OF CEILING & EXHAUST FANS TO BE PROVIDED.
- FOOT REST TO BE PROVIDED INSIDE TANK FOR MAINTENANCE PURPOSE (AS/SPECS).
- HARDWARE FOR DOORS & WINDOWS TO BE AS/SPECIFICATIONS.
- INTERNAL FINISH:
 - (a) FOR THE TANKS MEANT FOR SEWAGE COLLECTION = COAL TAR EPOXY.
 - (b) FOR THE TANKS MEANT FOR CLEAR WATER COLLECTION = CERAMIC TILES.

Key Plan:



ISSUES				
S. NO.	DATE	BY	TO	PURPOSE
1.	26-06-2014	ARCOP	SITE	GFC.
REVISIONS				

- NOTES:
1. ACRYLIC POLYMER BASED WATER PROOFING OF APPROVED MAKE ON HORIZONTAL SURFACE (TOP OF P.C.C. LAD FOR BASE, PLINTH BEAMS) & ON VERTICAL SURFACES (BASEMENT RETAINING WALL EXTERNAL SURFACE, BEAM SIDES).
 2. CRYSTALLINE WATER PROOFING TREATMENT TO BE DONE ON THE SURFACES OF WATER RETAINING STRUCTURES (ON HORIZONTAL & VERTICAL SURFACES BOTH).
 3. BRICKBAT COBA WATER PROOFING TO BE DONE ON TERRACE.
 4. REFERENCE VALUE OF +00 CORRESPONDS TO +521.55 LEVEL AND N.G.L VALUE IS +520.50 LEVEL FOR THIS BUILDING.



CLIENTS
Indian Institute of Technology(IIT) Hyderabad,
Ordnance Factory Estate,
Yeddumailaram-502205,
Andhra Pradesh, INDIA

ARCHITECTS & PLANNERS
ARCOP ASSOCIATES PVT. LTD.
E-106, G.K ENCLAVE PART 1
NEW DELHI 110048
PHONE : 011 - 26242050
FAX : 011 - 26242035

Architect's Signature
Client's Signature
Executive Engineer (C.I. ITH.
16 JUL 2014

Job Title
IITH EXTERNAL SERVICES
BUILDINGS

Drawing Title
MBR BASED SEWER TREATMENT
PLANT

Document Release Type
ARCHITECTURAL
GOOD FOR CONSTRUCTION

Job No.	2012/09	N
Scale	AS SPEC.	
Date	APR. 09, 2014	Drawing No.
Drawn by	JAI SAINI	STP-AR-04
Checked by	PANKAJ	Revision No.
AUTHORITY:		R0